

# Game Changers Set New Rules

# Game Changers Are Pioneers

# Game Changers Change Skylines

# Game Changers Are Value Creators



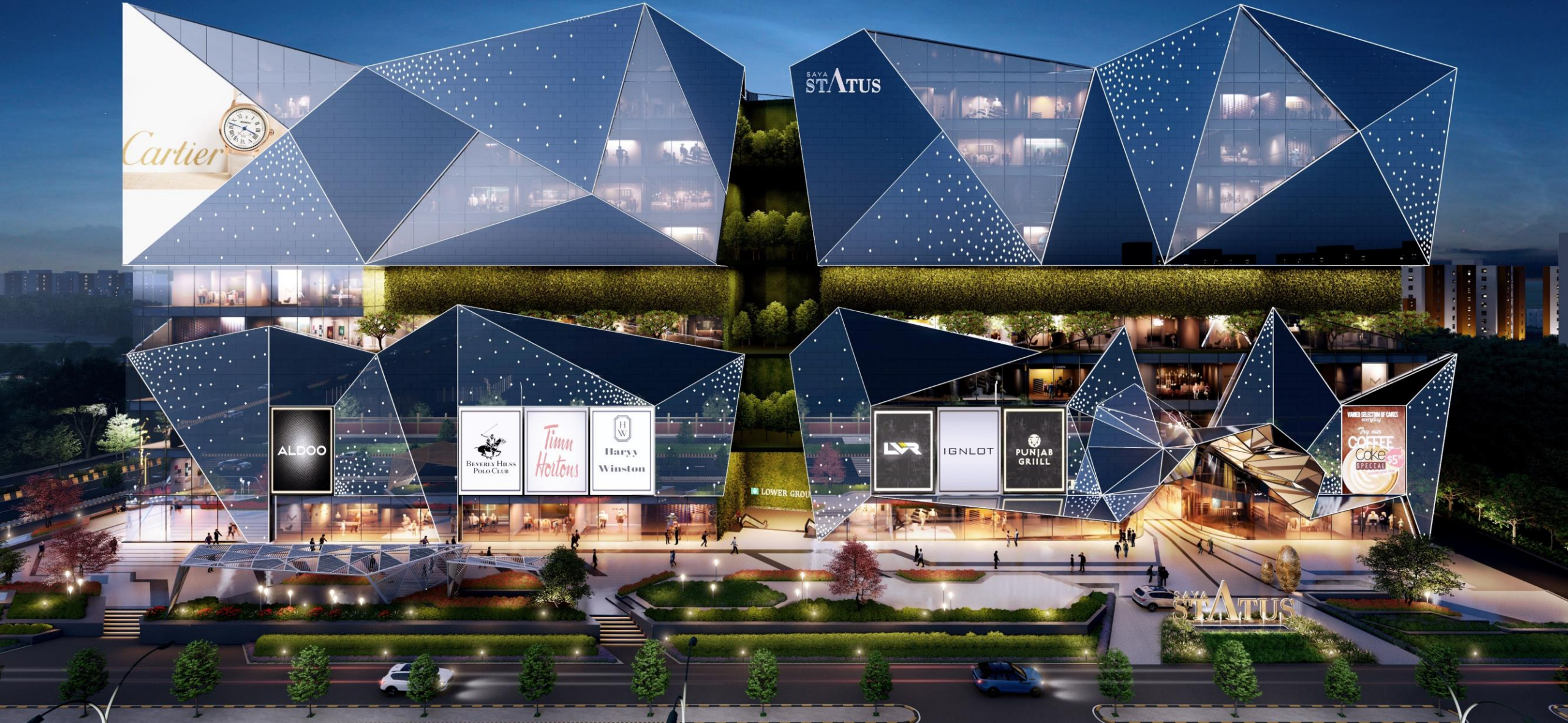
# Meet the New Retail Game Changer

*Unveiling*

SAYA  
**STATUS**  
India's Tallest Mall

#theretailgamechanger











1.4 Mn SQ. FT OF LARGE FUTURE READY RETAIL SPACE  
at Noida Expressway, a location that's becoming the  
choice of top corporates, large institutions and elite  
residential societies...





Footwear Zone

50% extra kasa dárko

50% extra kasa dárko

COFFEE

GUCCI

ODJA

Lifestyle store

ELECTRO MATE

First City

3000

mothercare

PUMA GRILL





BEVERLY HILLS POLO CLUB.  
CHARLES & KEITH  
VICTORIA'S SECRET  
VICTORIA'S SECRET  
INGLOT  
ALDO  
Bath & Body Works

kanyavar

LEVS

PETER BURCH

OUYEE

ETER E

CHARLES & KEITH

SOPHORA

ELLEN SOLL

MONTE CARLO

HUBLOP

AVERO EMODA

visney





9 LEVELS OF GREAT EXPECTATIONS for the world's finest brands to settle in. The most coveted names in luxury, fashion, lifestyle, entertainment, food & groceries have already chosen their new address...











DESIGNED BY DP ARCHITECTS, A SINGAPORE BASED  
multinational architectural industrial design firm. Their work includes The Dubai Mall as well as landmarks in Singapore, such as the People's Park Complex and Golden Mile Complex...





DECATHLONS

SPORT STADIUMS

Wen Do We Eat

PUNJAB GRILL

THE IRISH HOUSE

FAMLEYS

HEIGH ICON

POINTEXPORT

NOT2

LE 900







# 9 Floors of Great Opportunities

Every floor is a destination!

**Family shopping:**

A hypermarket provides everything the over 5 lakh families in the neighbourhood need.

**Global fashion:**

The world's most desired fashion brands have lined up to indulge you.

**Men's World:**

A zone set up to pamper men like never before.

**Women's Paradise:**

A tribute to the feminine mystique.

**Food Courts:**

Where every family member will find something to savour!

**Cine- Dine:**

A feast of entertainment, alongside a culinary feast!

**Gold Souk:**

Set to be NCR's most glittering jewellery shopping destination

**Wellness Zone:**

Futuristic gyms and rejuvenating spas, ready to transform you.

**Fine Dining:**

NCR's most sought after party destination!

# Lower Ground Floor: Food & Grocery, Anchor, Mini Anchor and Electronics Stores

Retail Unit Height: 18.5Ft



Ground Floor:  
International Fashion Anchors,  
Premium Fashion, Footwear,  
Cosmetics & Handbags

Retail Unit Height: 16.5 Ft





Floor 1:  
Men's Formal Wear, Footwear &  
Bags, Sportswear, Department  
store.

Retail Unit Height: 16.5 Ft



# Floor 2: Women's & Kids Fashion and Apparel, Cosmetics, Home Décor, Kitchen Equipment, Mother & Child Care and Ethnic Wear

Retail Unit Height: 16.5 Ft



Floor 3:  
Food Courts, Family  
Entertainment Centre, Fast  
Food, QSR & Toys Store

Retail Unit Height: 16.5Ft



# Floor 4: 6 Screens Multiplex, Speciality & Fine Dining Restaurants

Dedicated Parking on the 4<sup>th</sup> Floor

Retail Unit Height: 18.2 ft

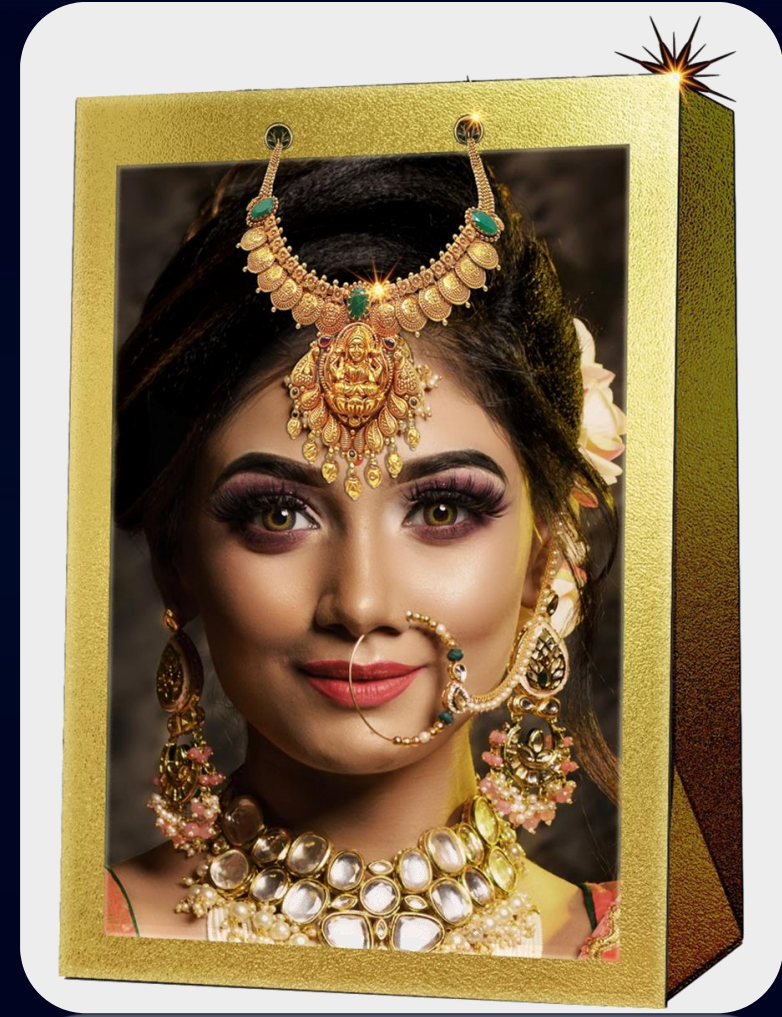




# Floor 5: Gold & Diamond Jewellery Stores

Dedicated Parking on the 5<sup>th</sup> Floor

Retail Unit Height: 16.5 ft



#theretailgamechanger

# Floor 6: Wedding Collection & Indian Designer Wear

Dedicated Parking on the 6<sup>th</sup> Floor

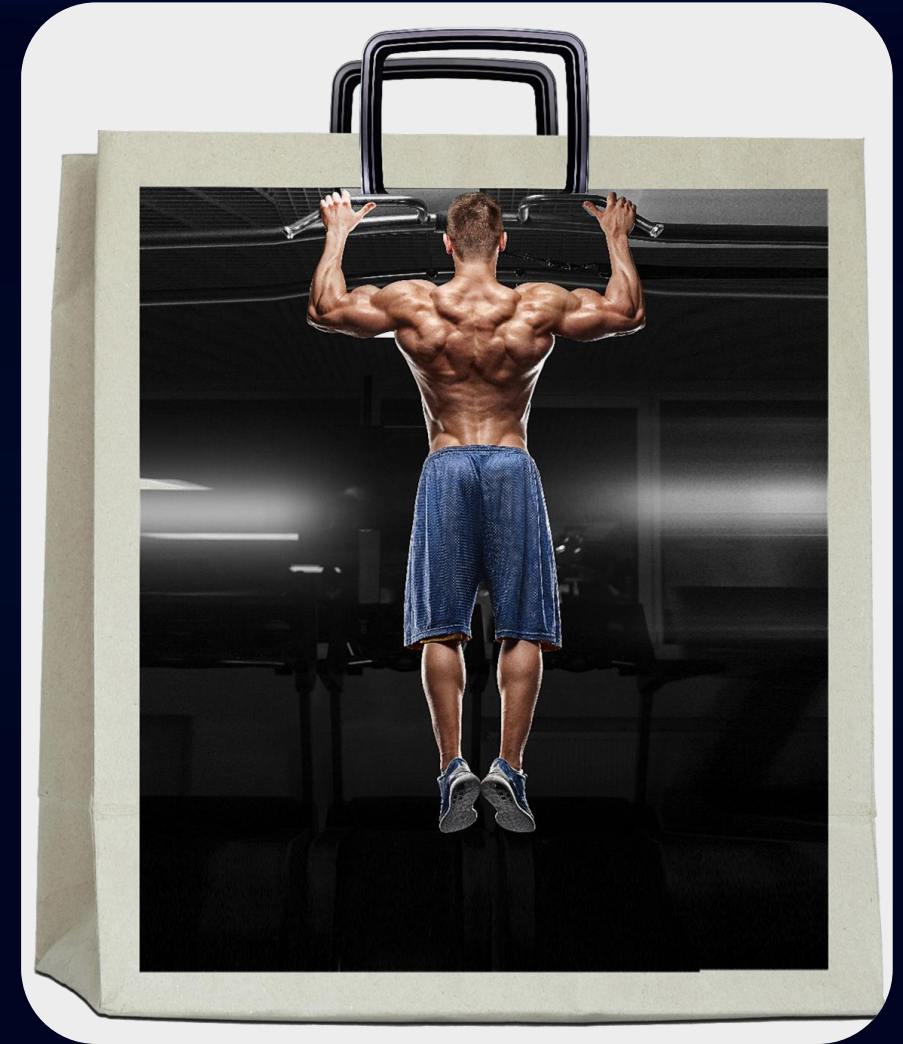
Retail Unit Height: 16.5 ft



# Floor 7: High End Diagnostic Centre, Wellness Clinics, Beauty Treatment & Gym

Dedicated Parking on the 7<sup>th</sup> Floor

Retail Unit Height: 16.5 ft

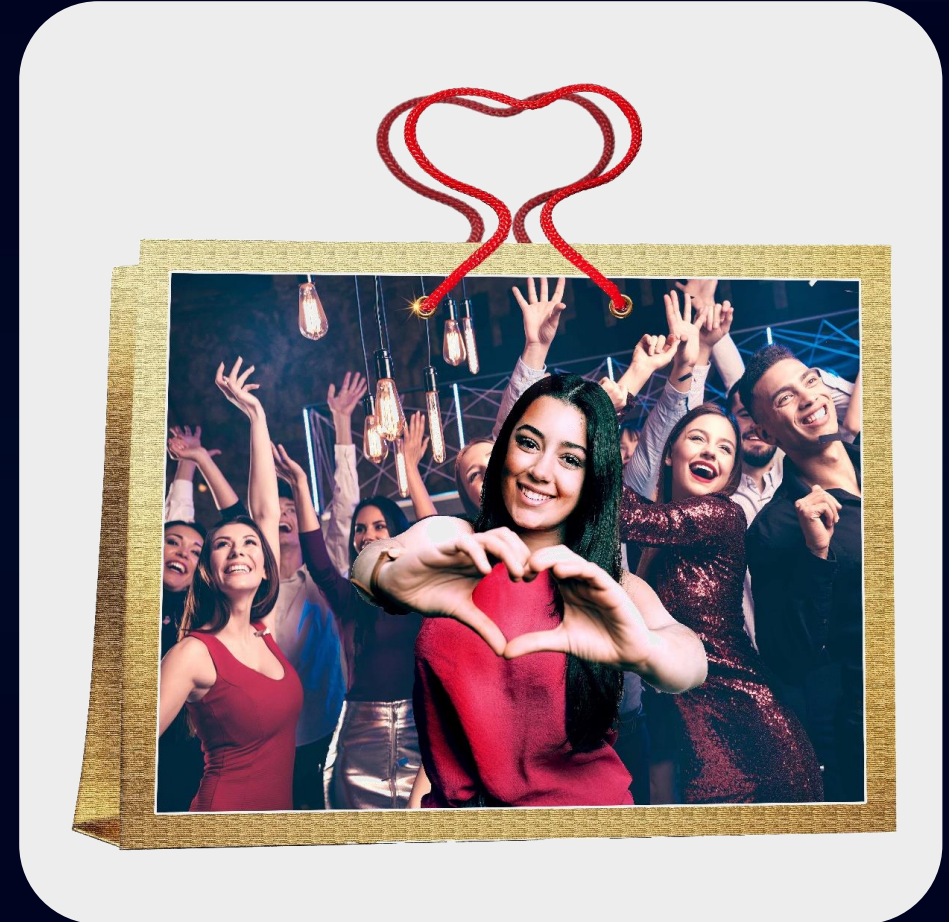




# Floor 8 & 9: Exclusive Premium Club, Pubs, Bars, Entertainment & Live Music

Dedicated Parking on the 8<sup>th</sup> & 9th Floors

Retail Unit Height : 16.5 ft





# Convenience at Every Corner

600 Dedicated Car Parking from 4<sup>th</sup> Floor to 9<sup>th</sup> Floor

1000 Car Parking on the Lower Ground Floor.







Saya STATUS can expect 50,000 direct walk-ins  
everyday...

*2 Lac residents in less than 2 Kms radius and 30 Lac Sq. ft. of corporate catchment*

↓ LOWER GROUND

#theretailgamechanger



## Top brands queuing up...

**ALDO***Tim Hortons*

CHARLES &amp; KEITH

VICTORIA'S SECRET

BEVERLY HILLS  POLO CLUB

Bath&amp;BodyWorks

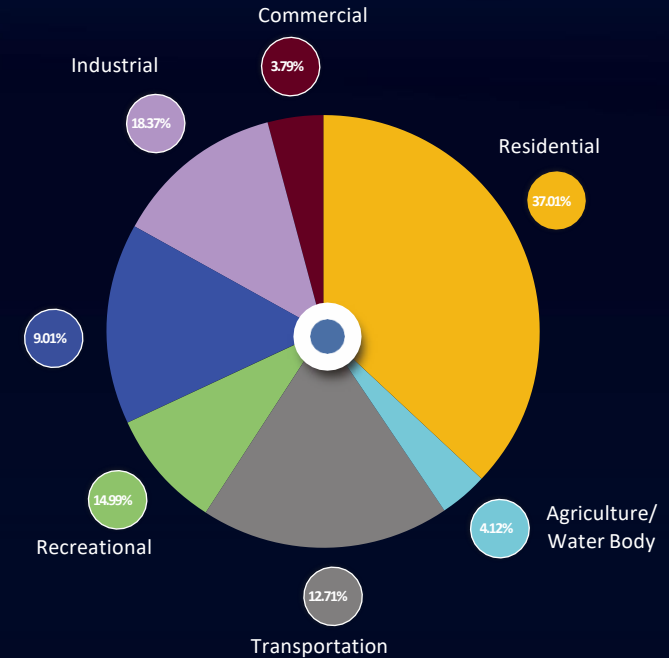
 la Vie en Rose**FOREVER 21****ck****R&B****INGLOT**

and the 1st time in Noida...



# The Demand Advantage

**3.79%** OF NOIDA'S Master plan is reserved for commercial space compared to Gurgaon's 5%



## Upcoming Jewar Airport

Land value and rental appreciation



## Metro Line

Improving connectivity from other parts of NCR

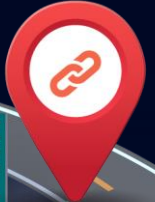


## Residential Societies

Large population residing across the expressway



## Excellent Connectivity to Central Delhi



## Noida Expressway



## An MNC Magnet

Headstrong, Sapient, Genpact, EXL Service, IBM, Fujitsu, Adobe Systems have large campuses in Noida.

#theretailgamechanger



## Synopsis of the Mall

Location	: Noida Expressway ,Sector 129
Primary Catchment	: Noida, Greater Noida, Ghaziabad, South & East Delhi with large numbers of MNC's, Premium Residential & IT parks
Secondary Catchment	: Entire Delhi NCR
Built Up Area	: 1.4 Mn
No Of Floors	: 1B +LGF+GF+9
Mall Entry Points	: 5
Mall Exit Points	: 5
Parking	: 1600 nos

Anchor	: 8 Anchors stores (Fashion, department, hyper market, home & lifestyle, electronics & entertainment)
Mini Anchor	: 10
Vanilla	: Over 214 vanilla store spaces to bring in a variety of categories
Fine Dine Restaurants	: 20
Food Court	: Over 22 food court stalls to serve approx 750 seats
Multiplex	: 6 screen Multiplex with 1300 seating capacity

Parking	: 1600 nos
Mall Exit Points	: 5
Mall Entry Points	: 5

Multiplex	: 6 screen Multiplex with 1300 seating capacity
Food Court	: Over 22 food court stalls to serve approx 750 seats

The World of



**SAYA**  
RELATIONSHIPS FOREVER

24 Years of  
Legacy

6 Mn+ Sq. Ft  
Delivered

3000+ Happy  
Families



# Projects Delivered



GHAZIABAD  
RESIDENTIAL



DELIVERED

Desire Residency has 2 & 3 BHK spacious apartments with all modern facilities topped with extravagant luxuries which complement the class. There are uncompromised amenities which include lifts, parking area, club, etc. The possession of flats in Desire Residency has been given within the promised timeframe.

Land Area	0.98 Acre (Approx.)
Total Built-up Area	18836 Sq. Mt.
Total Number of Units	138
Launch Year	2009
Possession Year	2011



GHAZIABAD  
RESIDENTIAL



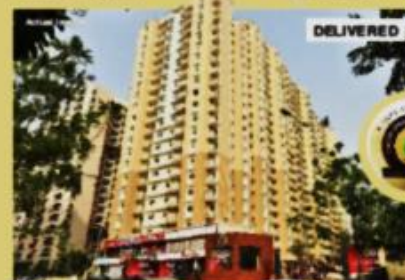
DELIVERED

Ready-to-move-in residential development Saya Zenith is an icon in Indrapuram for its well-appointed amenities and facilities. The development has 2 & 3 BHK apartments ranging between 110 Sq.M. and 200 Sq.M. divided among three towers.

Land Area	3.47 Acre (Approx.)
Total Built-up Area	83340 Sq. Mt.
Total Number of Units	442
Launch Year	2011
Possession Year	2013



GREATER NOIDA WEST  
RESIDENTIAL



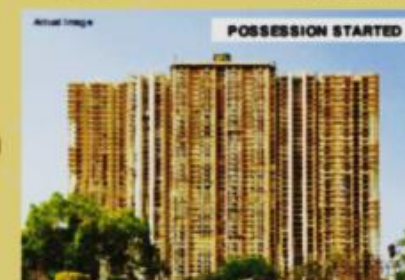
DELIVERED

Saya Zion, located in Greater Noida West, is a high-end luxury residential project within reach. The development is replete with all the modern facilities and amenities. Designed by the renowned architect Hafeez Contractor, Saya Zion offers 2, 3 & 4 BHK apartments.

Land Area	5.25 Acre (Approx.)
Total Built-up Area	139072 Sq. Mt.
Total Number of Units	760
Launch Year	2013
Possession Year	2017



GHAZIABAD  
RESIDENTIAL



POSSESSION STARTED

Designed to be your asset forever, the homes at Saya Gold Avenue are embellished with the best-in-class features. Located in the prime location of Indrapuram, right opposite a mall, it offers stylish 2, 3 & 4 BHK apartments that match international standards of quality and offer world-class specifications at an unbeatable price.

Land Area	5 Acre (Approx.)
Total Built-up Area	299100 Sq. Mt.
Total number of Units	1620
Launch Year	2015
Possession Year	2019



# Projects Under Development



**SAYA**  
P I A Z Z A

**The ultimate high-street destination with high entertainment**

SHOPPING  
DINING  
FOOD COURT  
ENTERTAINMENT

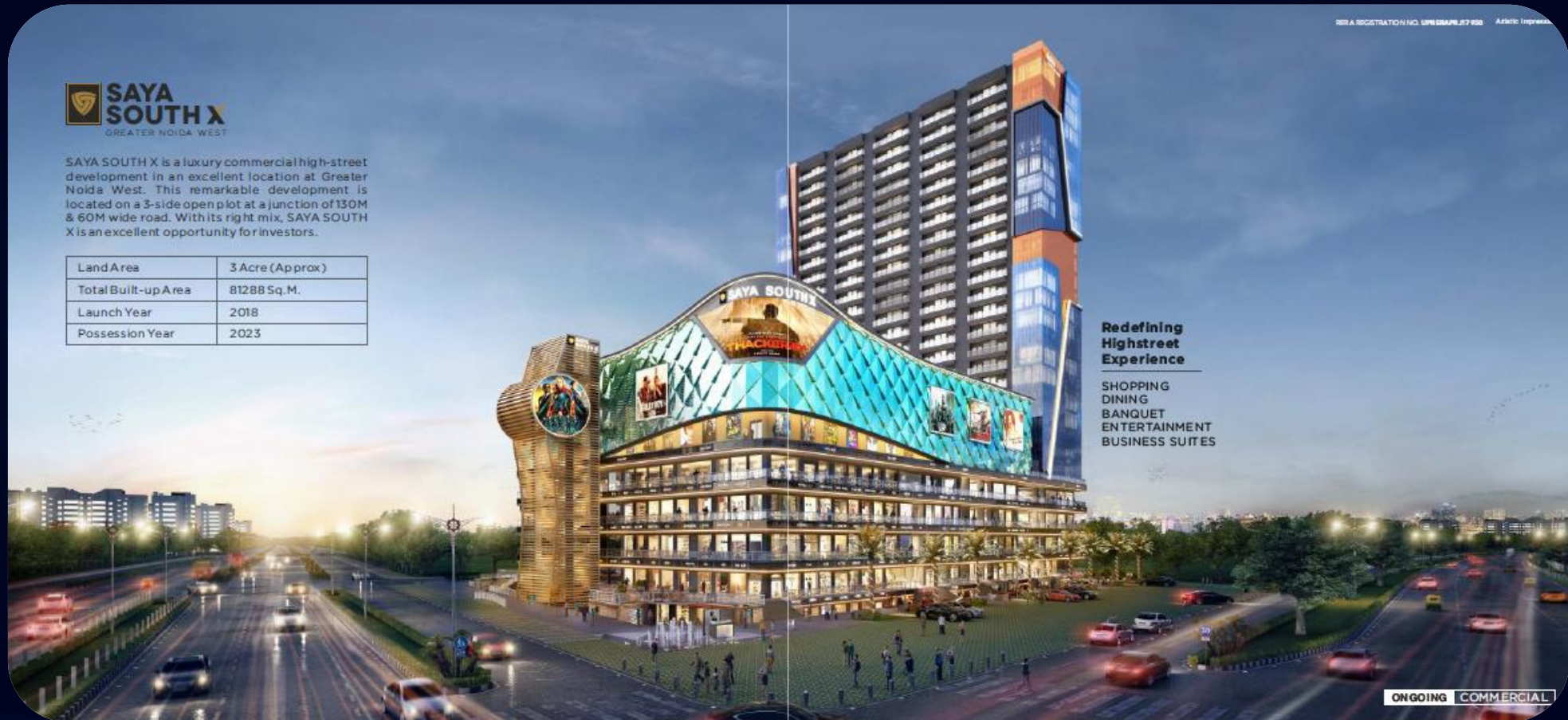
SAYA PIAZZA - A place for Extravaganza is a luxury at Sec-131, Jaypee Wish Town, Noida Expressway. This remarkable development is located on a 2-side open plot at a junction of 120ft wide road. With its right mix, SAYA PIAZZA is an excellent opportunity for Investors.

Land Area	1.72 Acre (Apx)
Total Built-up Area	20354.57 Sq.M.
Launch Year	2021
Possession Year	2026

ONGOING COMMERCIAL



# Projects Under Development



**SAYA SOUTH X**  
GREATER NOIDA WEST

SAYA SOUTH X is a luxury commercial high-street development in an excellent location at Greater Noida West. This remarkable development is located on a 3-side open plot at a junction of 130M & 60M wide road. With its right mix, SAYA SOUTH X is an excellent opportunity for investors.

Land Area	3 Acre (Approx)
Total Built-up Area	81288 Sq.M.
Launch Year	2018
Possession Year	2023

**Redefining Highstreet Experience**

SHOPPING  
DINING  
BANQUET  
ENTERTAINMENT  
BUSINESS SUITES

ONGOING COMMERCIAL

SAYA  
**STATUS**  
India's Tallest Mall

#Bethethegamechanger